



US010096000B2

(12) **United States Patent**
Joao

(10) **Patent No.:** **US 10,096,000 B2**

(45) **Date of Patent:** ***Oct. 9, 2018**

(54) **APPARATUS AND METHOD FOR PROVIDING JOB SEARCHING SERVICES, RECRUITMENT SERVICES AND/OR RECRUITMENT-RELATED SERVICES**

(58) **Field of Classification Search**
CPC G06Q 10/1057; G06Q 10/0615; G06F 17/30389
See application file for complete search history.

(71) Applicant: **Raymond Anthony Joao**, Yonkers, NY (US)

(56) **References Cited**

(72) Inventor: **Raymond Anthony Joao**, Yonkers, NY (US)

U.S. PATENT DOCUMENTS

(73) Assignee: **GTJ VENTURES, LLC**, Yonkers, NY (US)

5,884,272 A * 3/1999 Walker G06Q 30/0615 379/93.12
6,266,659 B1 * 7/2001 Nadkarni G06F 17/30389 705/7.14

(*) Notice: Subject to any disclaimer, the term of this patent is extended or adjusted under 35 U.S.C. 154(b) by 0 days.

(Continued)

This patent is subject to a terminal disclaimer.

Primary Examiner — Jean M Corrielus

(74) *Attorney, Agent, or Firm* — Raymond A. Joao, Esq.

(21) Appl. No.: **15/669,920**

(57) **ABSTRACT**

(22) Filed: **Aug. 5, 2017**

An apparatus, including a memory which stores work schedule information or scheduling information for an employer, hiring entity, individual, independent contractor, temporary worker, or freelancer; a receiver which receives a first request to obtain work schedule information or scheduling information for the employer, hiring entity, individual, independent contractor, temporary worker, or freelancer, and the first request is received from a first communication device; a processing device, specially programmed for processing information contained in the first request, generates a first message containing the work schedule or scheduling information for the employer, hiring entity, individual, independent contractor, temporary worker, or freelancer; and a transmitter for transmitting the first message to the first communication device or to a second communication device. The apparatus processes information in a second request. Information contained in the second request is based on the work schedule information or the scheduling information contained in the first message.

(65) **Prior Publication Data**

US 2017/0337519 A1 Nov. 23, 2017

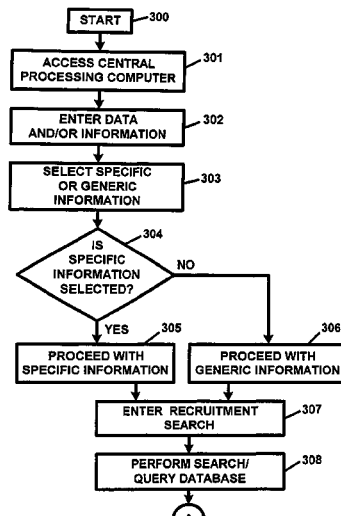
Related U.S. Application Data

(63) Continuation of application No. 14/839,946, filed on Aug. 29, 2015, now Pat. No. 9,760,864, which is a (Continued)

(51) **Int. Cl.**
G06F 17/30 (2006.01)
G06Q 10/10 (2012.01)
G06Q 30/02 (2012.01)
G06Q 10/06 (2012.01)

(52) **U.S. Cl.**
CPC ... **G06Q 10/1053** (2013.01); **G06Q 10/06311** (2013.01); **G06Q 10/10** (2013.01); (Continued)

20 Claims, 16 Drawing Sheets



Related U.S. Application Data

continuation of application No. 12/315,124, filed on Nov. 29, 2008, now Pat. No. 9,152,943, which is a continuation of application No. 10/691,796, filed on Oct. 23, 2003, now Pat. No. 7,490,086, which is a continuation of application No. 09/612,528, filed on Jul. 7, 2000, now Pat. No. 6,662,194.

(60) Provisional application No. 60/146,776, filed on Jul. 31, 1999.

(52) **U.S. Cl.**
CPC **G06Q 10/105** (2013.01); **G06Q 30/02** (2013.01); **Y02P 90/86** (2015.11); **Y10S 707/99933** (2013.01); **Y10S 707/99934**

(2013.01); **Y10S 707/99935** (2013.01); **Y10S 707/99944** (2013.01); **Y10S 707/99945** (2013.01); **Y10S 707/99948** (2013.01)

(56)

References Cited

U.S. PATENT DOCUMENTS

6,370,510 B1 *	4/2002	McGovern	G06Q 10/10 705/321
6,457,005 B1 *	9/2002	Torrey	G06Q 10/02
7,305,347 B1 *	12/2007	Joao	G06Q 10/1057 705/35
2002/0120532 A1 *	8/2002	McGovern	G06Q 10/10 705/321

* cited by examiner

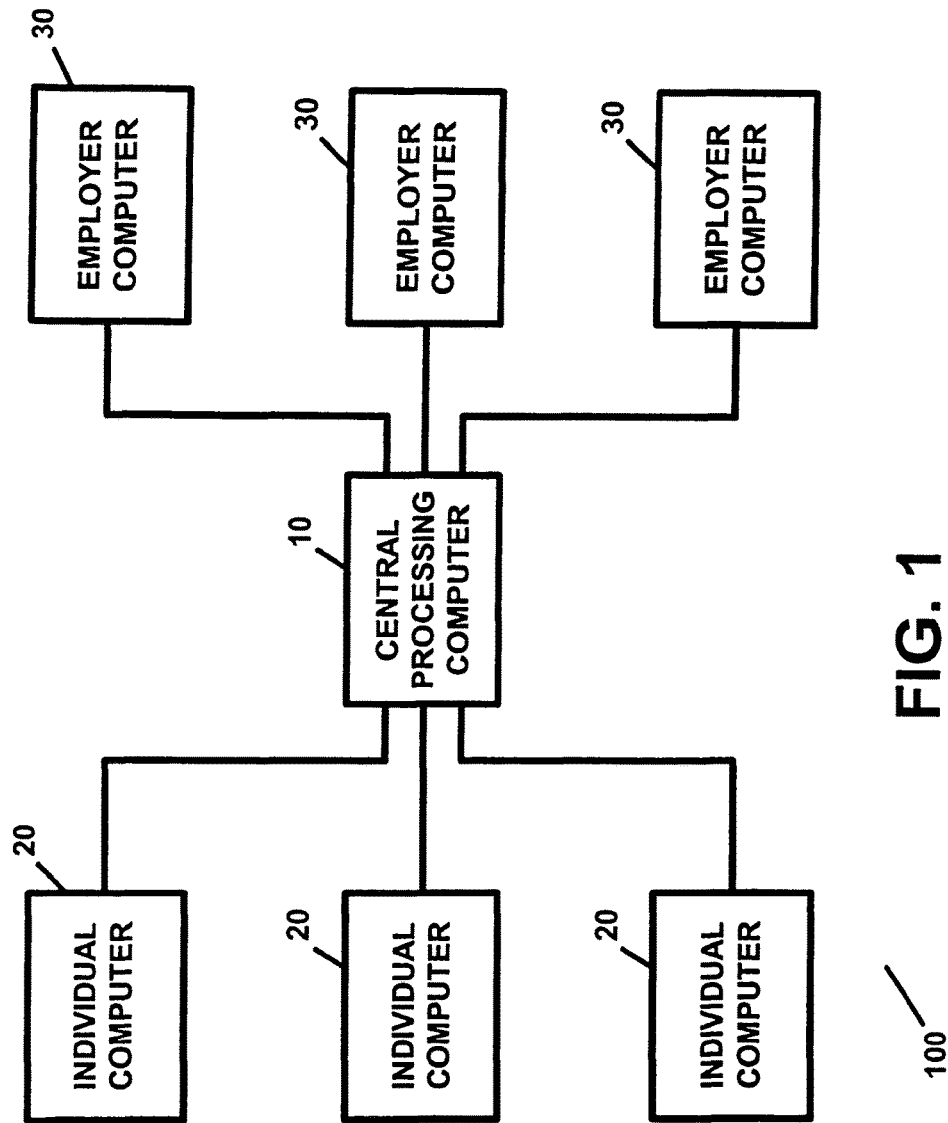


FIG. 1

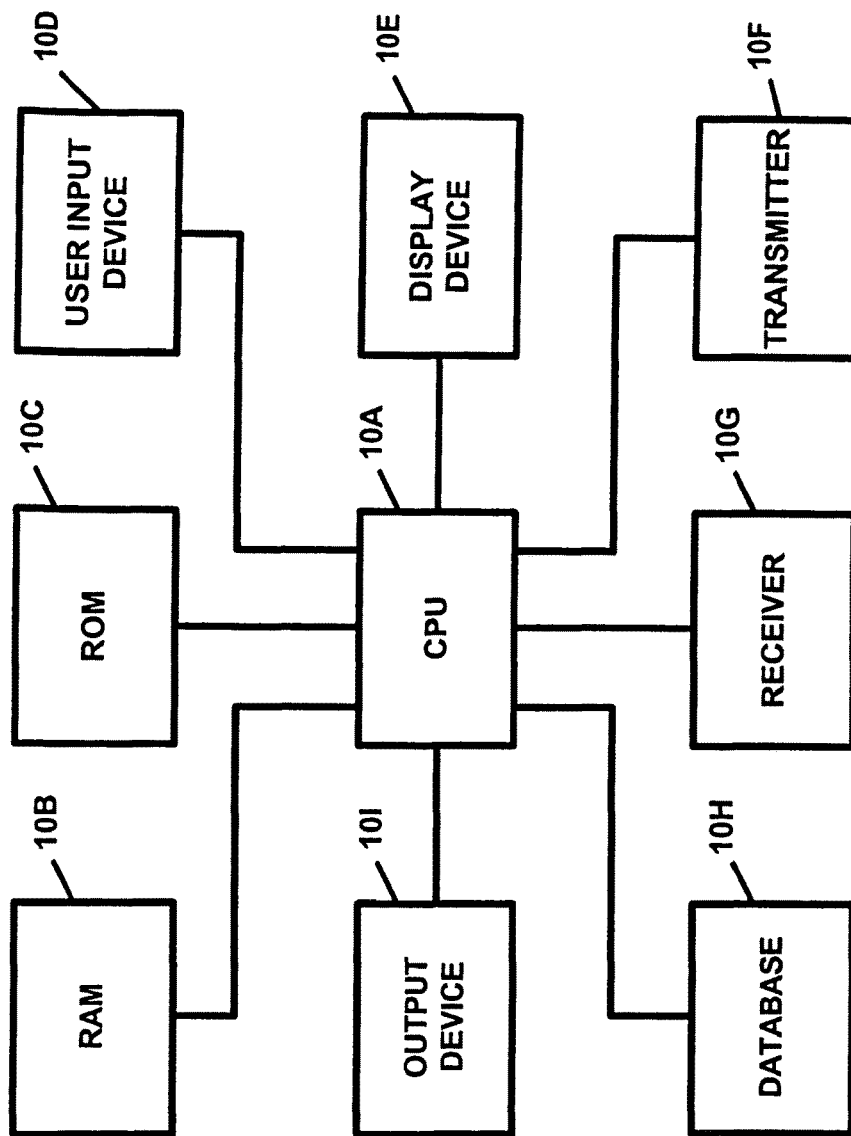


FIG. 2

10

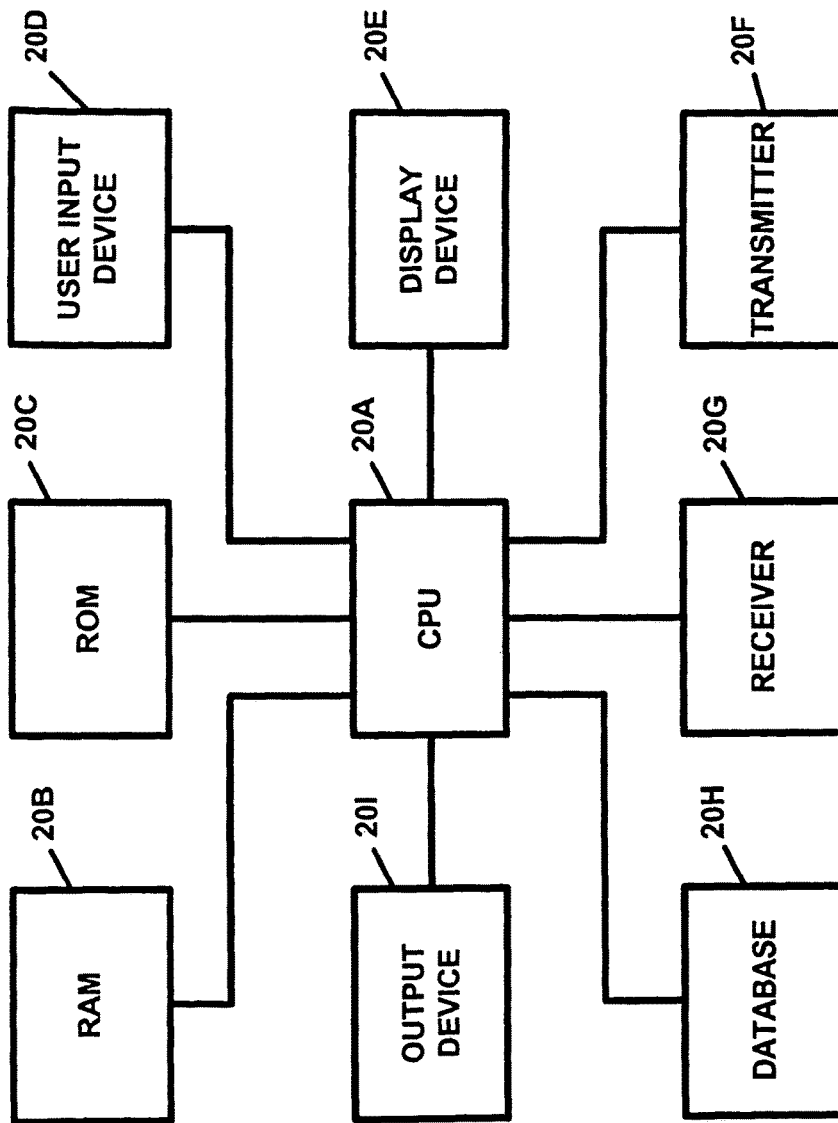


FIG. 3

20

Explore Litigation Insights

Docket Alarm provides insights to develop a more informed litigation strategy and the peace of mind of knowing you're on top of things.

Real-Time Litigation Alerts



Keep your litigation team up-to-date with **real-time alerts** and advanced team management tools built for the enterprise, all while greatly reducing PACER spend.

Our comprehensive service means we can handle Federal, State, and Administrative courts across the country.

Advanced Docket Research



With over 230 million records, Docket Alarm's cloud-native docket research platform finds what other services can't. Coverage includes Federal, State, plus PTAB, TTAB, ITC and NLRB decisions, all in one place.

Identify arguments that have been successful in the past with full text, pinpoint searching. Link to case law cited within any court document via Fastcase.

Analytics At Your Fingertips



Learn what happened the last time a particular judge, opposing counsel or company faced cases similar to yours.

Advanced out-of-the-box PTAB and TTAB analytics are always at your fingertips.

API

Docket Alarm offers a powerful API (application programming interface) to developers that want to integrate case filings into their apps.

LAW FIRMS

Build custom dashboards for your attorneys and clients with live data direct from the court.

Automate many repetitive legal tasks like conflict checks, document management, and marketing.

FINANCIAL INSTITUTIONS

Litigation and bankruptcy checks for companies and debtors.

E-DISCOVERY AND LEGAL VENDORS

Sync your system to PACER to automate legal marketing.