

EXHIBIT A



US010176332B2

(12) **United States Patent**
Nonaka et al.

(10) **Patent No.:** **US 10,176,332 B2**

(45) **Date of Patent:** **Jan. 8, 2019**

(54) **SERVER, DATA OUTPUT SYSTEM, DATA OUTPUT METHOD, AND OUTPUT TERMINAL**

(56) **References Cited**

U.S. PATENT DOCUMENTS

(75) Inventors: **Nobuyuki Nonaka**, Tokyo (JP);
Toshimi Koyama, Tokyo (JP)
(73) Assignee: **UNIVERSAL ENTERTAINMENT CORPORATION**, Tokyo (JP)
(*) Notice: Subject to any disclaimer, the term of this patent is extended or adjusted under 35 U.S.C. 154(b) by 1291 days.

5,544,321 A	8/1996	Theimer et al.	
6,570,610 B1 *	5/2003	Kipust	348/156
6,590,877 B1	7/2003	Yamakita	
7,230,519 B2 *	6/2007	Coughlin et al.	340/5.82
7,324,476 B2 *	1/2008	Agrawal et al.	370/329
7,513,425 B2 *	4/2009	Chung	235/385
2003/0172001 A1	9/2003	Yasuda et al.	
2004/0193742 A1	9/2004	Ikeda	
2005/0094184 A1	5/2005	Suyehira	
2006/0111053 A1 *	5/2006	Wu et al.	455/90.3

FOREIGN PATENT DOCUMENTS

(21) Appl. No.: **11/452,281**

EP	1339015 A1 *	8/2003	G06K 19/077
JP	A-11-187127	7/1999		
JP	A-11-191043	7/1999		

(22) Filed: **Jun. 14, 2006**

(Continued)

(65) **Prior Publication Data**

US 2006/0289626 A1 Dec. 28, 2006

Primary Examiner — Thien M Le

(74) *Attorney, Agent, or Firm* — Lex IP Meister, PLLC

(30) **Foreign Application Priority Data**

Jun. 24, 2005 (JP) 2005-184854

(57) **ABSTRACT**

A server comprises an electronic data item receiving unit, an identification code receiving unit, an identification code storing unit, and an electronic data item transmitting unit. The electronic data item receiving unit receives an electronic data item. When a person exists within a predetermined range from an output terminal, the identification code receiving unit receives a first identification code concerning any one of the person and a device used by the person and a second identification code for identifying the output terminal. The identification code storing unit stores therein the first and second identification codes received by the identification code receiving unit, in association with each other. The electronic data item transmitting unit transmits the electronic data item received by the electronic data item receiving unit to a corresponding output terminal based on the first and second identification codes stored in the identification code storing unit.

(51) **Int. Cl.**

G06K 19/06 (2006.01)

G06F 21/60 (2013.01)

(52) **U.S. Cl.**

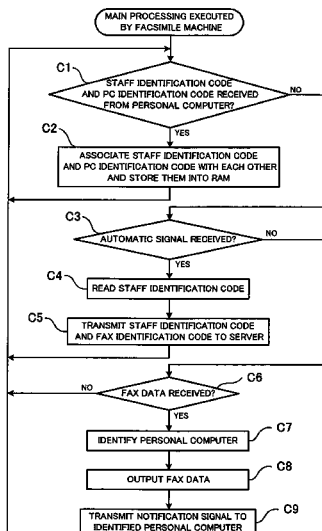
CPC **G06F 21/606** (2013.01); **G06F 2221/2153** (2013.01)

(58) **Field of Classification Search**

CPC .. G06F 21/608; G06Q 10/00; G06Q 20/3674; G06Q 20/40; G07C 9/00111
USPC 705/1, 18, 44, 67; 235/382, 385; 370/279, 329, 338; 455/90.3

See application file for complete search history.

19 Claims, 9 Drawing Sheets



(56)

References Cited

FOREIGN PATENT DOCUMENTS

JP	A-2003-244059	8/2003
JP	2003-323490	11/2003
JP	A-2004-015401	1/2004

* cited by examiner

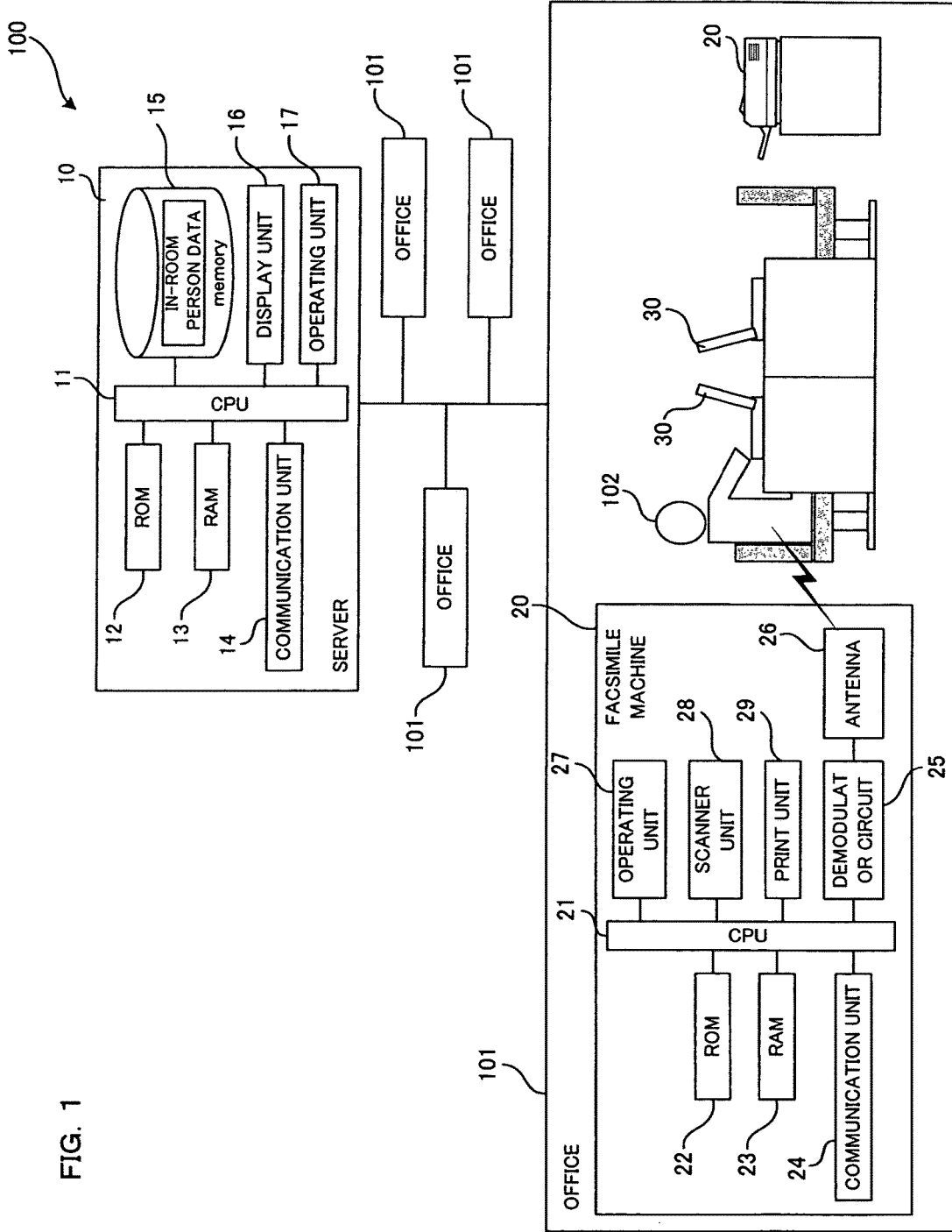
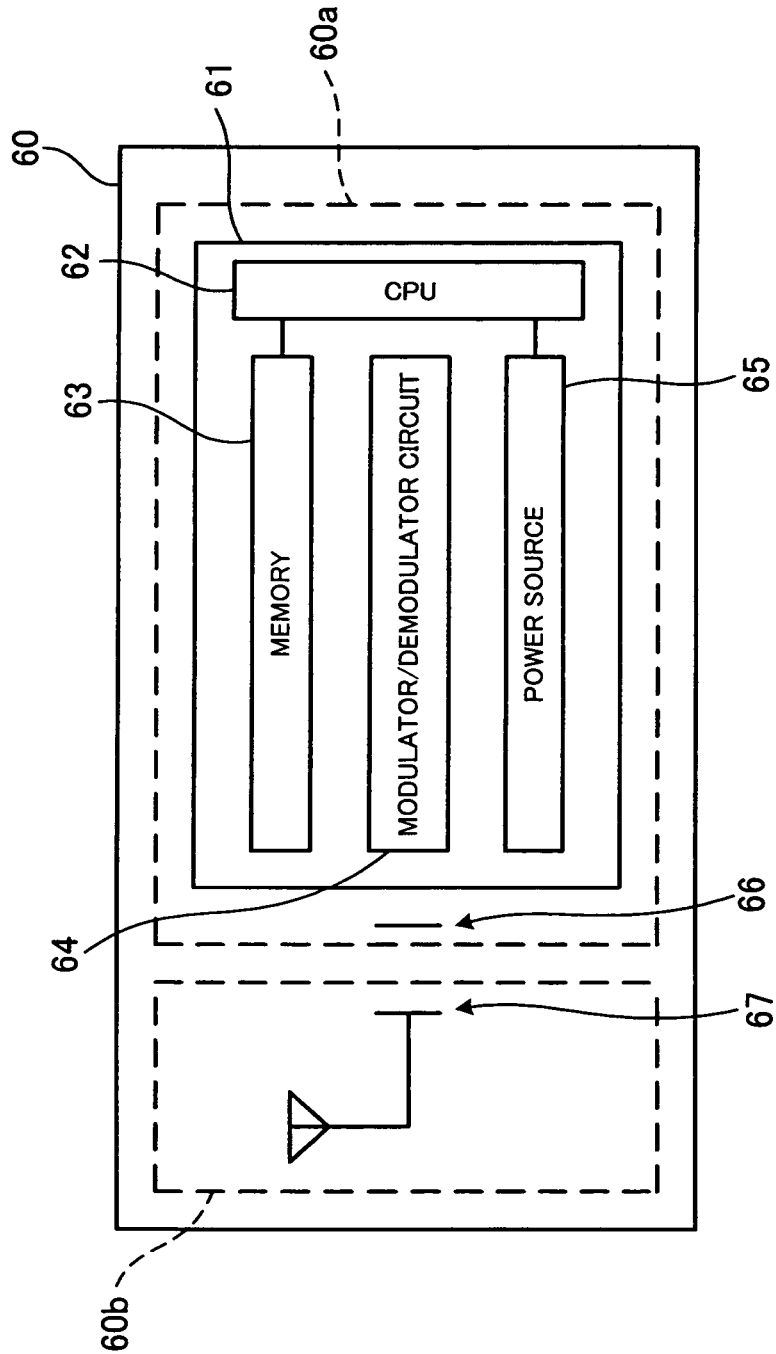


FIG. 2



Explore Litigation Insights

Docket Alarm provides insights to develop a more informed litigation strategy and the peace of mind of knowing you're on top of things.

Real-Time Litigation Alerts



Keep your litigation team up-to-date with **real-time alerts** and advanced team management tools built for the enterprise, all while greatly reducing PACER spend.

Our comprehensive service means we can handle Federal, State, and Administrative courts across the country.

Advanced Docket Research



With over 230 million records, Docket Alarm's cloud-native docket research platform finds what other services can't. Coverage includes Federal, State, plus PTAB, TTAB, ITC and NLRB decisions, all in one place.

Identify arguments that have been successful in the past with full text, pinpoint searching. Link to case law cited within any court document via Fastcase.

Analytics At Your Fingertips



Learn what happened the last time a particular judge, opposing counsel or company faced cases similar to yours.

Advanced out-of-the-box PTAB and TTAB analytics are always at your fingertips.

API

Docket Alarm offers a powerful API (application programming interface) to developers that want to integrate case filings into their apps.

LAW FIRMS

Build custom dashboards for your attorneys and clients with live data direct from the court.

Automate many repetitive legal tasks like conflict checks, document management, and marketing.

FINANCIAL INSTITUTIONS

Litigation and bankruptcy checks for companies and debtors.

E-DISCOVERY AND LEGAL VENDORS

Sync your system to PACER to automate legal marketing.